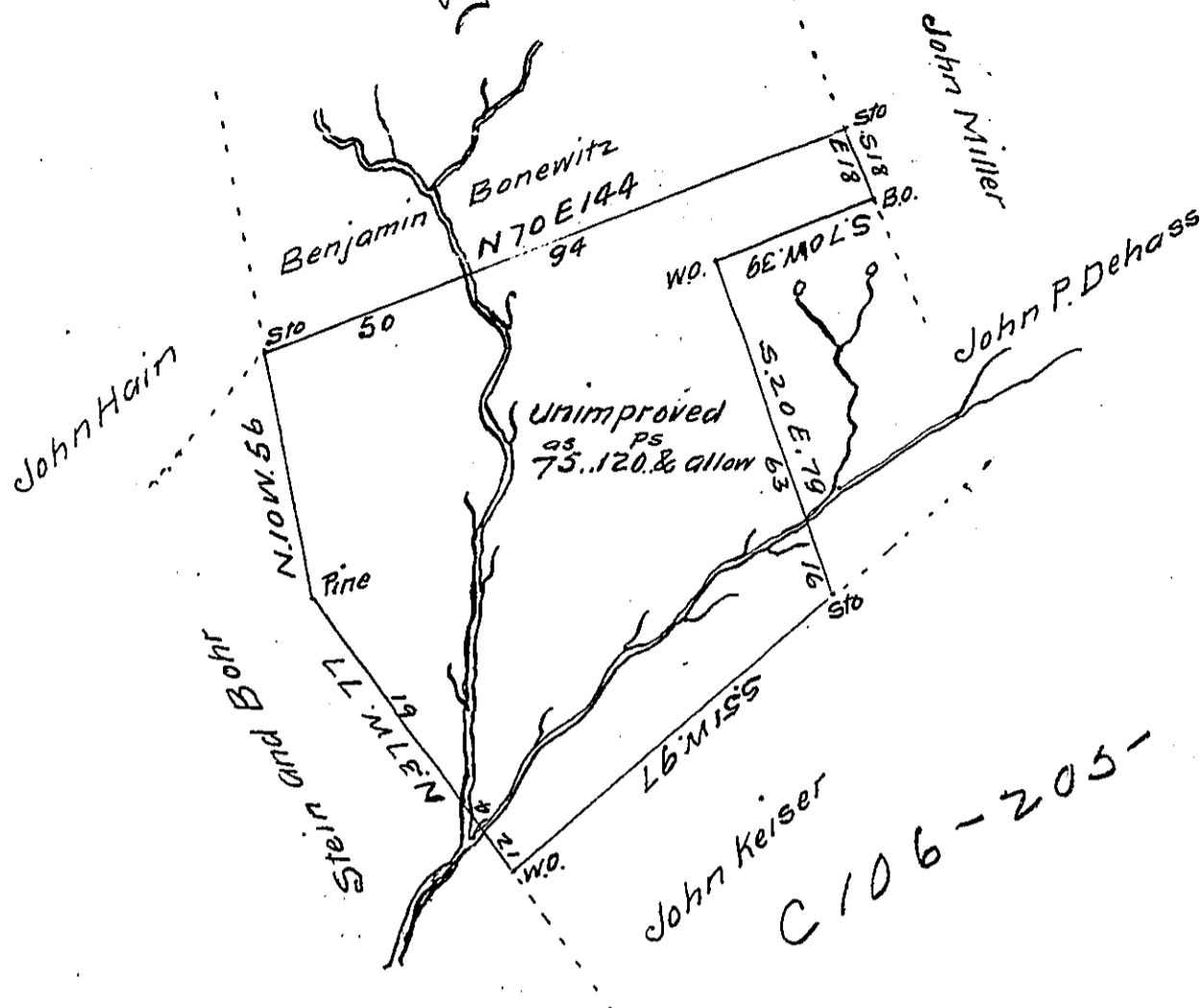


Pg 250



Situate in Pinegrove Township Schuylkill County containing Seventy five acres and one hundred and twenty perches and the allowance of six percent. Surveyed on the 2<sup>d</sup>. day of December 1828 in pursuance of a warrant dated the 22<sup>d</sup> day of October 1828 granted Benjamin Bonewitz

To Gabriel Hiester Esquire  
 Surveyor General of Pennsylvania

F. Lauderbrun  
 Dep. Sur. Schuylkill Co.

the above land is claimed by Peter Knabb of Oley Township in the County of Berks

F. Lauderbrun

IN TESTIMONY that the above is a copy of the original remaining on file in the Department of Internal Affairs of Pennsylvania, made conformably to an Act of Assembly approved the 16th day of February, 1833, I have hereunto set my Hand and caused the Seal of said Department to be affixed at Harrisburg, this eighteenth day of September 1911

*Nancy Houch*  
 Secretary of Internal Affairs.